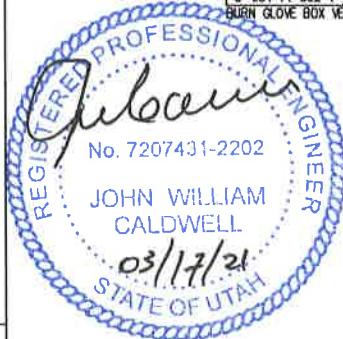
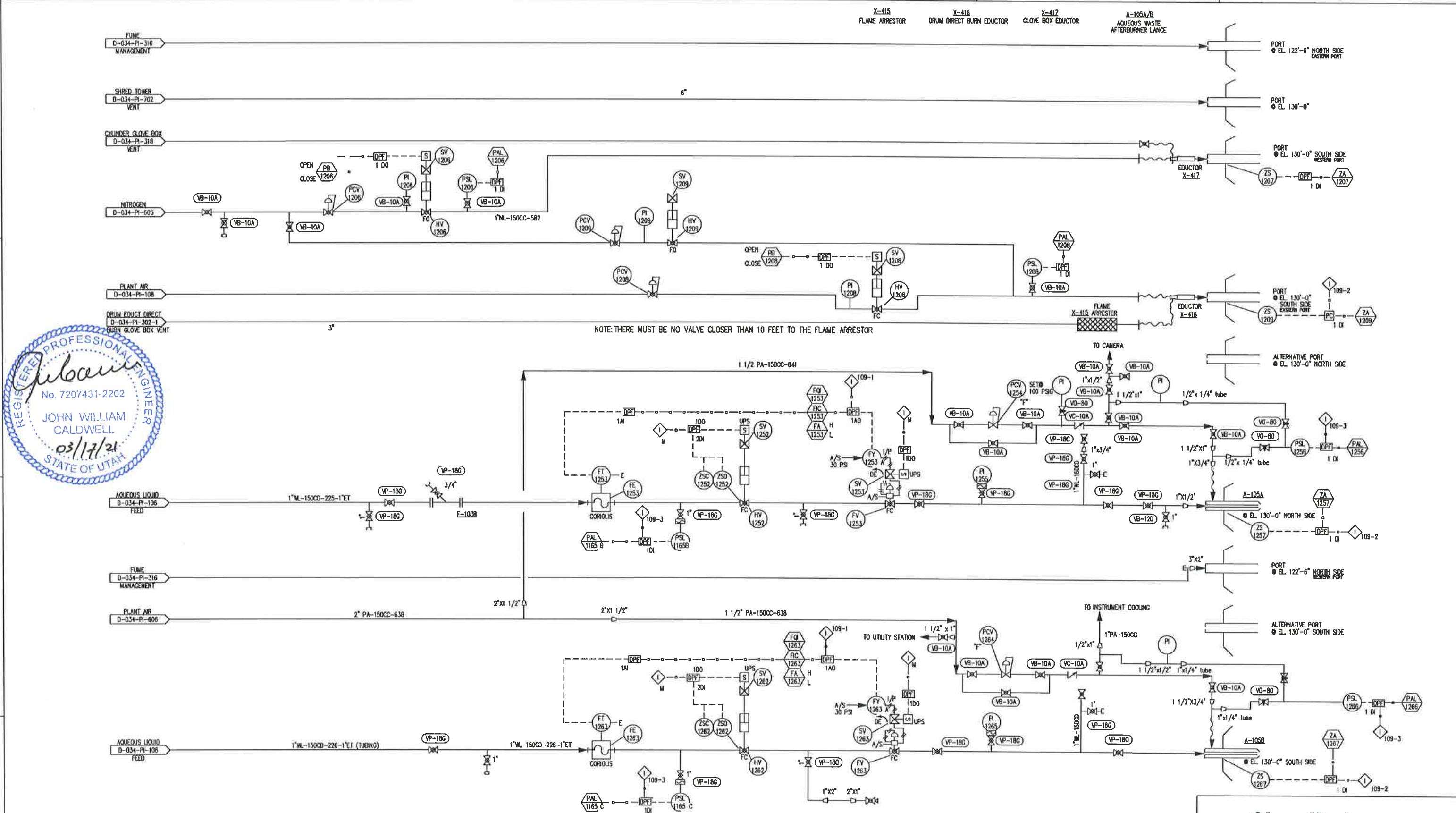


A

B

C

D



NOTE: THERE MUST BE NO VALVE CLOSER THAN 10 FEET TO THE FLAME ARRESTOR

INTERLOCK DESCRIPTION

M MASTER INTERLOCK SYSTEM
 109-1 VALVE CLOSED OR MIN FIRE BEFORE BLOCK VALVE CAN BE OPENED.
 109-2 LANCE IN POSITION BEFORE VALVE CAN OPEN.
 109-3 MINIMUM PRESSURE REQUIRED TO OPERATE FEED LINE

REVISIONS

NO	DESCRIPTION	DATE	BY	CHK	ENG MGR
1	2016 KILN PHA, CORRECTIONS, ALTERED ROUTING	11-23-16	MM	TL	
2	ADDED SHRED TOWER VENT/PORT	03-19-19	PEC	PEC	
3	AS-BUILT	03-16-21	KB	TH	SS
4	AS BUILT	10-15-91	DCP		CHW
5	AS BUILT	12-07-93	DCP		

REVISIONS

NO	DESCRIPTION	DATE	BY	CHK	ENG MGR
6	TO CORRECT DRAFTING ERRORS & AS BUILT F.M.	04-21-98	CRM		
7	MODIFIED COMPRESSED GAS FEED AND MISC CORR	06-19-03	LCC		
8	ADDED DRUM DIRECT BURN GLOVE BOX	11-4-03	KL		
9	ADDED PORT ORIENTATION	11-13-03	KL		
10	REMOVED AQUEOUS STRAINERS, CORRECTIONS	6-14-06	KL		

APPROVALS

BY	DATE
CRM	04-21-98
LCC	06-19-03
KL	11-4-03
KL	11-13-03
KL	6-14-06
AS BUILT	



ARAGONITE LLC
 THIS DRAWING IS THE PROPERTY OF CLEAN HARBORS, ARAGONITE LLC
 ANY REUSE, REPRODUCTION, OR DISSEMINATION OF THIS DRAWING
 OR USE WITHOUT WRITTEN PERMISSION OF CLEAN HARBORS IS PROHIBITED.

TITLE: UTAH ENVIRONMENTAL SERVICE CENTER
 INCINERATION PLANT FOR INDUSTRIAL WASTES
 P&ID AFTERBURNER CONTROLS, SHEET 3

FOR TOOELE SITE CAD NO. #583
 SCALE JOB NO. APTUS DWG NO. D-034-PI-109
 REGISTERED PROFESSIONAL ENGINEER DATE: 12